



R Series

12.0/14.0/16.0t Diesel

Drive axle

Made in China, EP-customized, heavy-duty car master reducer, wheel end reducer; open cam brake, air pressure driving brake, spring energy storage parking brake.

Gear-box

Imported gear-box, multi-stage torque converter, big converter ratio, wide range of auto-adjust speed; stable and smooth shift, 2 stage forward and 1 stage backward, easy operation and maintenance.

Steering system

EP-made transverse steering axle; with sensors item is to make easy steering.

Hydraulic system

China made pump valve. Multi-hydraulic valve make it easy to operate. Load sensor hydraulic system, double pumps supply, dynamic load sensor priority valve, reduce non-working power consumption, reduce hydraulic oil temperature.

Chassis

Combine frame structure with box-shape structure; high intensity, low weight, increase the cooling area of oil tank.

Power system

Yuchai YC6B160Z-T21 turbocharger 6 cylinders engine, high performance, low oil consumption, low speed with high torque, great power reserve. Great capacity cooler, oil and water are together, huge cooling area, abundant cooling capacity.

Lifting assembly

Connect with body pin shaft, wide double mast, increased gantry resistance to torsion, wide view; standard forks can be adjusted with leading screw by hand, cylinder adjust is an option.

Overhead guard

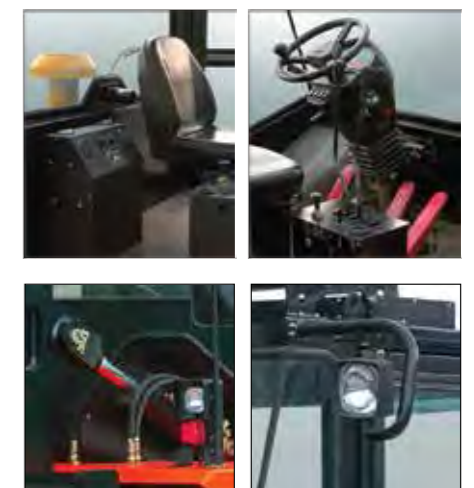
Full-floating type, connected with 4 point type rubber absorber, tilted structure is easy to enter and maintain inside; diminutive steering column and steering wheel, wide space for driver's legs. Cabin is for an option.

Electrical system

Combined dashpanel. Well-equipped information display, with alert function. Neutral starting in 0 shift of engine; low brake pressure alert; it will sound alert when low pressure or non-lease parking brake occurs.

Brake system

Adopt auto parts, air pressure power brake, which has the virtues that are not only with little strength but also no pollution which oil leakage causes.



R series 12.0 - 16.0t forklift specification:

		EP								
		CPCD120		CPCD140		CPCD160				
General	1 Manufacturer	EP								
	2 Basic model	CPCD120		CPCD140		CPCD160				
	3 Type	XG35	XW25	XG35	XW25	XW40	XW25			
Dimensions	4 Power type	Diesel		Diesel		Diesel				
	5 Rated capacity	kg		12000		14000				
	6 Load center	mm		600		600				
	7 Fork spread(outside)	Min. / Max.	mm		520 / 2200		520 / 2200			
	8 Lift height	mm		3000		3000				
	9 Fork size	L × W × T	mm		1500 × 200 × 80		1500 × 200 × 85			
	10 Mast tilt range	F / R	(°)		6 / 12		6 / 12			
	11 Fork overhang(Wheel center to fork face)	mm		760		785		800		
	Overall dimensions	12 Length to face of fork	mm		4500		4710		4820	
		13 Overall width	mm		2420		2490		2490	
14 Mast lowered height		mm		3180		3270		3290		
15 Overhead guard height/Cabin height		mm		2910/3050		2940/3080		2960/3100		
16 Overall length(standard fork length)		mm		6000		6210		6320		
17 Turning radius(outside)	mm		4150		4350		4450			
Performance	18 Speed	Travel (No load / Full load)	km/h		28		29		30	
		Lifting / Lowering (Full load)	mm/sec		350		350		330	
	20 Max.gradeability(Full load)	%		20		20		20		
	21 Max. drawbar pull (Full load)	kN		100		100		100		
Chassis	22 Tyres	Front	mm		10.00 - 20 - 14PR		11.00 - 20 - 18PR		12.00 - 20 - 20PR	
		Rear	mm		10.00 - 20 - 14PR		11.00 - 20 - 18PR		12.00 - 20 - 20PR	
	24 Tread	Front/Rear	mm		1800/1920		1800/1890		1800/1890	
	25 Wheelbase	mm		3000		3000		3000		
	26 Ground clearance	Mast	mm		250		250		270	
		Wheelbase center	mm		315		330		350	
28 Self weight	kg		15600		17600		19200			
29 Battery	Voltage / Capacity(20HR)	V/Ah		24 / 120		24 / 120		24 / 120		
Power	30 Engine	Model	YC6B160Z-T21	QSB6.7-C160	YC6B160Z-T21	QSB6.7-C160	6BTA5.9-C160	QSB6.7-C160		
		Manufacture	CHINA		CUMMINS		CHINA		CUMMINS	
		Rated output / r.p.m.	kw/rmp		115 / 2300		119 / 2300		118/2200	
		Rated torque / r.p.m.	N-m/rmp		560 / 1500		731 / 1500		670/1500	
		34 No.of cylinder			6		6		6	
		35 Bore × Stroke	mm		108 × 125		107 × 124		108 × 125	
		36 Emission STD.			Stage 3A/Tier3		Stage 3A/Tier3		Stage 3A/Tier3	
37 Stage	FWD/RVS			2 / 1		2 / 1		2 / 1		
38 Operating pressure	MPa		20		20		20			
Brake	39 Driving brake	Pneumatic Drum								
	40 Parking Brake	Spring energy storage								

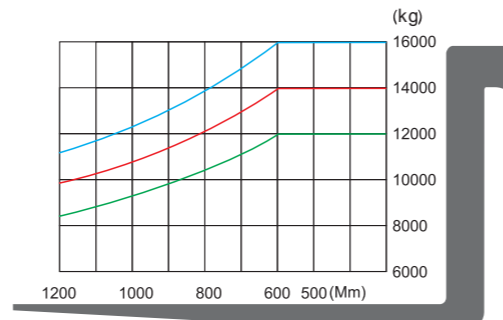
1. Special lifting height available (3.6m, 4m, 4.5m, 5m, 5.5m, 6m, 7m.). 2. Attachment available.
3. The specifications in the table are for standard models only. For further information please contact us. 4. Specifications are subject to change without notice.



Options

- 2.5-6.0m duplex mast
- Special carriage and backrest
- Solid tyre
- Heater and air conditioner
- Other dimension forks
- Other attachments
- Fire extinguisher
- Suspension seat
- Dual air cleaner or special air cleaner
- Rear working light
- Customer painting
- Cab
- Hydraulic positioner

LOAD CHART



R series 12.0 - 16.0t forklift mast specification:

Type	Model	Mast fork height	Overall height		Tilt range		Capacity
			Lowered	Extended Without backrest	FWD	RWD	Load capacity at 600 mm Double tire
GX120MX	GX120M300	3000	3180	4695	6	12	12000
	GX120M330	3300	3330	4995	6	12	12000
	GX120M360	3600	3480	5295	6	12	12000
	GX120M400	4000	3680	5695	6	12	12000
	GX120M430	4300	3880	6030	6	6	12000
	GX120M450	4500	3980	6230	6	6	12000
	GX120M480	4800	4130	6530	6	6	12000
	GX120M500	5000	4230	6730	6	6	12000
	GX120M550	5500	4530	7280	3	6	10000
	GX120M600	6000	4780	7780	3	6	9000
GX140MX	GX140M300	3000	3270	4770	6	12	14000
	GX140M330	3300	3420	5070	6	12	14000
	GX140M360	3600	3570	5370	6	12	14000
	GX140M400	4000	3770	5770	6	12	14000
	GX140M430	4300	3970	6120	6	12	14000
	GX140M450	4500	4070	6320	6	12	14000
	GX140M480	4800	4220	6620	6	6	14000
	GX140M500	5000	4320	6820	6	6	14000
GX160MX	GX160M300	3000	3290	4790	6	12	16000
	GX160M330	3300	3440	5090	6	12	16000
	GX160M360	3600	3590	5390	6	12	16000
	GX160M400	4000	3790	5790	6	12	16000
	GX160M430	4300	3990	6140	6	12	16000
	GX160M450	4500	4090	6340	6	12	16000
	GX160M480	4800	4240	6640	6	6	16000
	GX160M500	5000	4340	6840	6	6	16000
	GX160M550	5500	4640	7390	3	6	14000
	GX160M600	6000	4890	7890	3	6	12500



DIMENSIONS

